



THE WINNER'S CIRCLE

A Publication of the Indianapolis Chapter of the Construction Specifications Institute

MEETING DATE:
Thursday March 18, 2010

MEETING SCHEDULE:
5:30 p.m. Social Hour
6:30 p.m. Dinner
7:15 p.m. Program

MEETING LOCATION:
Riverwalk Banquet Center
Broad Ripple
Indianapolis, IN 46204

FEES:
Members: Free
Guest: \$25.00
Students: \$5.00

RESERVATIONS:
Please RSVP via the chapter website, or contact the Chapter Voice Mail, (317) 465-1491

MEMBERSHIP MONTH

Getting Value out of your Membership

Programs Committee

Due to scheduling conflict with Mike Davis, our March meeting will feature Dennis J. Hall, FCSI, FAIA, SCIP, CSI Institute President-Elect. He will be speaking on the State of the Institute and the Value of CSI Membership.

Dennis (a.k.a. The Southern Fried Architect) is well known and regarded within CSI for his work as head of the MasterFormat 2004 Task Team. Dennis has spoken to our Chapter before and "looks forward to being again in our great city." Welcome Dennis!

Also, don't miss out on the Seminar on ASHRAE 90.1 (continued). It will be presented earlier in the day. Registration is OPEN. Read more about it later in this newsletter.

INSIDE THIS ISSUE

- [VIEW FROM THE TOWER](#)
- [Seminar: An Overview of ASHRAE 90.1-2007](#)
- [CERTIFICATION QUIZ](#)
- [TECHniques](#)

MARCH 18, 2010

Seminar: An Overview of ASHRAE 90.1-2007

APRIL 15, 2010

April Meeting: J.W. Marriott Tour and Program

MARCH 18, 2010

March Meeting: Evening with Institute President-Elect Dennis Hall

MAY 20, 2010

May Meeting: Metal Corrosion and Protection



VIEW FROM THE TOWER

March 2010

Phillip C. McMullan, CSI, AICP 2009 – 2010 Chapter President



"Vote: The only commodity that is peddleable without a license."
Mark Twain

It is time for each of you to vote. How many chances do you get to vote twice? That is the case this year. During this election cycle we have board members to elect for two separate boards.

Vote.

In your official ballot envelope you will find two separate ballots. The yellow ballot and supporting candidate information is for the

CSI Indianapolis Chapter Board election. On this ballot choose four of the six candidates. The second ballot is green and is for the election of the board for CSI Indianapolis Education Foundation. On this ballot you will need to choose seven of the eight candidates.

Vote.

Remember that your ballots must be at the chapter post office box two days prior to the meeting on the 18th. If you have any doubt, bring the ballots to the meeting on the 18th.

Regardless of your method of delivery, remember that you must sign the back of the ballots for your votes to be counted.

Vote.

(continued on page 3)





EDGEWOOD
BUILDING • SUPPLY

www.edgewoodbuildingsupply.com

Quality Face Brick (FBX)
Thin Brick Systems
Manufactured Stone Products
Natural Stone Products
Clay Pavers

NORTH 430 W. CARMEL DR. 1580 E. EPLER AVE. SOUTH
CARMEL, IN INDIANAPOLIS
317.846.6060 317.786.9208

MASONRY • DRYWALL

SEMINAR: AN OVERVIEW OF ASHRAE 90.1-2007

Edmund Brown - Education Chair

Speaker Bio

Jerry has been a member of the ASHRAE 90.1 committee for over 19 years. He was chair of the Committee for 5 years along with the Lighting and Power subcommittee chair. Jerry is also member of the ASHRAE ISO/TC 205 committee which is the USA representatives to the International Energy Code Standards. He has also been the President of the Illuminating Engineering Society of North America. He led or was part of 3 delegations of professional lighting designers and illumination scientist as representatives of our government to the governments of China and Russia to conduct educational seminars. He has been a consulting engineer for over 40 years with projects in 36 states and internationally.

Abstract

This seminar is an extension of the seminar that took place September 2009. ASHRAE 90.1-2007 marks a dramatic improvement in the energy conservation requirements for buildings in Indiana. While most of the states surrounding Indiana have adopted one of the International Energy Conservation (IECC) Codes, Indiana failed to adopt the Interim 2004 Code during the last revision cycle. Currently, Indiana has a less stringent energy code than surrounding states (older than ASHRAE 90.1 – 1989/ 2000 IECC). Federal mandates to the states have forced Indiana to adopt a more stringent code. It is the baseline standard for LEED projects and closely parallels the International Energy Conservation Codes.

There is a misconception that architects are not interested in mechanical matters. One of the primary roles of architect is that of a coordinator. It is important for one to understand some of the engineering items, such as lighting or HVAC in order to best coordinate information amongst the design team. It does not mean that the architect is to be a master of each discipline. The architect should be aware of these issues and be able to communicate these concerns with the engineers.

This seminar will provide:

- An overview and history of ASHRAE 90.1
 - Front-end information on ASHRAE 90.1, as well as information on
- (continued on page 5)*

MARVIN
Windows and Doors

Built around you.

Steve Lien CSI, CDT, AIA
Senior Commercial Sales Manager
SteveLi@marvin.com
(317)752-8070

Integrity
for MARVIN
Windows and Doors
Built to perform.

THERMAX Wall System

DOW

SEWARD SALES CORPORATION

INNOVATIVE • SUSTAINABLE • BEAUTIFUL

www.rogersblock.com

ROGERS BLOCK

IR Ingersoll Rand
Security Technologies

KEN COOK@IRCO.COM



administration- A review of the organization and components of ASHRAE 90.1 as it applies to the building envelope

- A review of the components of ASHRAE 90.1 as it applies to HVAC systems and water heating
- A review of the components of ASHRAE 90.1 as it applies to Lighting and Power requirements
- A discussion of the Energy Cost Budget (ECB)
- The future of ASHRAE 90.1

HELP REVIEW CSI PROJECT GUIDES

Paul M.Sternberg, CSI CCS CCCA AIA LEED-AP

CSI Technical Committee has an immediate need for interested volunteers to help review the new Project Guides. Project Guides are the new modular update of the Project Resource Manual (PRM). They will be provided as separate publications dealing with specific practice issues - Project Delivery, Specifications, Construction Administration, Product Representation, Facility Management, and Sustainability. The Project Delivery and Construction Administration guides are almost complete, with Specifications following closely behind. They have a planned manuscript completion date of May 2010. The remaining guides will be developed through this year, with final dates to be determined.

The Project Guides will be used as the basis for each of the CSI Certification programs. The guides are being reviewed by the CSI Technical, Certification, and Education committees. If you have a particular interest in any of these areas, you are a good candidate as a reviewer. A two week time period is generally allotted for review of each draft. Reviews are collected and then sent to the draft author(s).

CSI is asking for help with reviewing and commenting on the draft documents, with an emphasis on consistency of content and completeness in addressing the issues covered in each guide. If you are interested in participating in this process, please contact Greg Ceton at CSI, gceton@csinet.org or (703) 706-4723.

If you have any questions about the Project Guides, please contact Paul Sternberg at pmsternberg@comcast.net or (765) 378-6560.





CERTIFICATION QUIZ

Indianapolis Chapter Quizmaster

Jack P. Morgan, CSI, CCS, CCCA, MAI, AIA

1. The difference between open and closed proprietary specifications:

- a. Allowances
- b. Submittals
- c. Substitutions
- d. Alternates

2. All of the following are performance requirements EXCEPT:

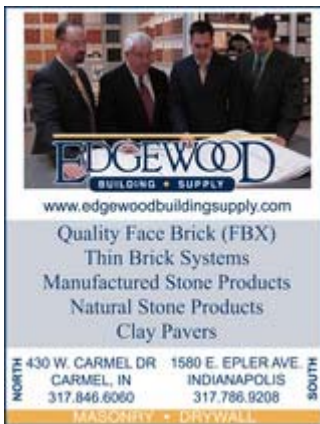
- a. Interface characteristics
- b. Life Safety
- c. Standards
- d. Waste products and discharge

3. The best way to proceed with bidding and contract award even though certain design decisions have not been made is through use of:

- a. Unit Prices
- b. Cash allowances
- c. Quantity allowances
- d. Alternates

4. The correct method to notify bidders that a substitution has been approved during the Bidding Phase is by:

(continued on page 7)




METAL-ERA
 Continuing Education Program

Free Webinars Offered Monthly

[Click for More Info](#)





SpecCentre
 Services

HARDWARE SPECIFICATIONS & CONTINUING EDUCATION
 Laura Frye, AHC, CSI, CDT
 765-242-1214



- a. Modification
 - b. Addenda
 - c. Telephone
 - d. Letter
5. "Terms and Conditions" refers to:
- a. The requirements that apply to maintaining valid warranties.
 - b. The General Conditions and Supplementary Conditions.
 - c. The Contract between the Owner and the Contractor.
 - d. Insurance settlements.

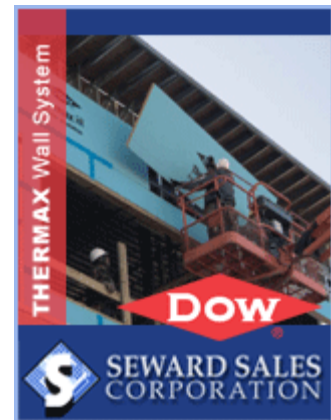
ADVERTISING

And we keep growing!

Dan McCloskey Communications Chair

Again this month I would like to welcome, new advertiser (but old friend of the chapter), Seward Sales to the list of advertisers with the chapter. We certainly do rely on you the members to help maintain the quality chapter that we have. We hope, with this help, you the advertiser also gains benefit by exposure to the best networking solution in the industry.

If you and your company/products would like to advertise with the chapter, at a great rate, please let me know!





Advertise
with Us

TECHNIQUES

Conserve Your Energy: the New Indiana Energy Conservation Code

Paul M. Sternberg CSI CCS CCCA AIA LEED-AP

(Reprise from October 2009)

Background

Indiana's current Energy Conservation Code was promulgated in 1994 and is based on the Model Energy Code written in 1992. Adoption of the Code was the result of the enactment of the Federal Energy Policy Act of 1992 (EPACT92), which required states to establish minimum commercial and residential energy codes.

The Model Energy Code is the Great Grandfather of ANSI/ASHRAE/IESNA 90.1 and the International Energy Conservation Codes (IECC). The basic approach to energy conservation through prescriptive design is consistent. Each updated version fine tuned the standard and addressed new technology and practice. Familiarity with the current Code thus applies to the new Code.

Every surrounding state has already adopted a more stringent energy conservation Code. Most are on their second iteration of the IECC. Four years ago, our Trade Show Seminar presented a program on the International Energy Conservation Code, expecting Indiana adoption. The proposed adoption of the 2004 International Energy Conservation Code (IECC) in 2006 was unsuccessful.

The current Indiana Energy Conservation Code (InECC) has many similar provisions and calculation requirements with the newer codes.

- * Based on climate zones
- * Prescriptive methods
- * Required insulating values
- * Required equipment performance measures

Current Status

The proposed Indiana Code and amendments was released in early 2009. Public meetings to receive amendment proposals were held in June and July, 2009. Amendments were finalized and the *(continued on page 9)*



final public hearing was held in January 2010. The final rule was adopted and is expected to have an effective date near May 1, 2010. It applies to all Class 1 structures. See the General Administrative Rules (GAR) 675 IAC 12-6-2 – Sec. 2.b for definition, at <http://www.in.gov/legislative/iac/T06750/A00120.PDF>.

This month we'll start looking at the envelope (architectural) requirements. In following articles we will complete reviewing envelope requirements and then look at the plumbing, HVAC, and electrical requirements.

Climate Zones

The starting point for architectural performance is determination of the project climate zone. Climate Zones are determined from heating or cooling degree days and humidity profile. Zones are mapped to the county level. Indiana has 2 zones – 4A and 5A. Zone 4A is comprised of roughly the southern third of the state.

Space Definitions

Energy Code requirements are dependent on the space use and whether or not it is conditioned. Spaces are defined by use:

- * Nonresidential conditioned space: "all occupancies other than residential"
- * Residential conditioned space: "spaces in buildings used primarily for living and sleeping. Residential spaces include, but are not limited to:
 - * dwelling units
 - * hotel/motel guest rooms
 - * Dormitories
 - * nursing homes
 - * patient rooms in hospitals
 - * lodging houses
 - * fraternity/sorority houses
 - * Hostels
 - * Prisons
 - * fire stations"
- * Semi-heated space: "heated by a heating system whose output capacity is greater than or equal to 3.4 Btu/h-ft² of floor area but is not a conditioned space"

Conditioned spaces are further defined: "a cooled space, heated space, or indirectly conditioned space defined as (continued on page 10)



follows:

- * Cooled Space: an enclosed space within a building that is cooled by a cooling system whose sensible output capacity exceeds 5 Btu/h-ft² of floor area
- * Heated Space: an enclosed space within a building that is heated by a heating system whose output capacity relative to the floor area is greater than or equal to the criteria in Table 3.1"
- * "Conditioned" does not mean air-conditioned, it includes heated-only spaces
- * very few spaces qualify as semi-heated

Mandatory Provisions

ASHRAE 90.1 has mandatory provisions that apply to all structures. Items with mandatory provision include building envelope sealing, insulation, fenestration and doors, air leakage, loading dock weatherseals, and vestibules.

- * Envelope Sealing: seal, caulk, gasket, weatherstrip all openings
- * Insulation: minimum values are required under the prescriptive design options.
- * Air leakage: air leakage less than 1.0 cfm/sf for glazed swinging doors and revolving doors, less than 0.4 cfm/ft² for other fenestration.
- * Loading Dock Weatherseals: required to limit leakage when truck is parked
- * Vestibules: Required in Climate Zone 4 for entrances in in bldgs over 10,000 sf, and in Climate Zone 5 for entrances in buildings over 1,000 sf.

Exceptions are provided for small spaces and revolving doors. Doors flanking revolving doors entering large lobbies will require vestibules.

Design Methods

The Code is based on prescriptive design requirements, with little flexibility for trade-offs. There is a straight prescriptive method, and a prescriptive trade-off option. One amendment to the Code is to remove energy cost budgeting as an alternative compliance path. The State has indicated that it will not readily accept, if at all, variance requests based on an energy cost budget. There is a provision for trade-offs, but is only applicable to the particular system being reviewed – i.e., you can't trade better HVAC performance for a higher lighting power budget, as you can with an energy cost budget. Next month, we'll review the prescriptive envelope requirements and the trade-off method available.

Indiana has adopted the easiest to check and most difficult to design to compliance method. Many of us design structures outside the scope of the prescriptive method. Design compromises may be required to meet the Energy Conservation Code requirements. This will be an area where sharing knowledge between firms may be helpful in determining the workable limitations (*continued on page 11*)



of the new Code.

Stay tuned for more!

Resources:

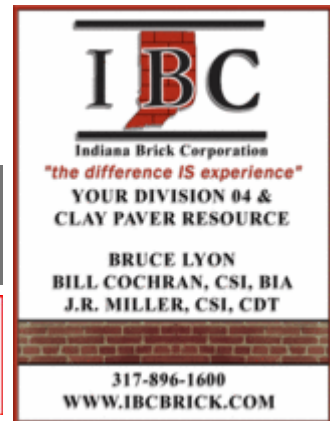
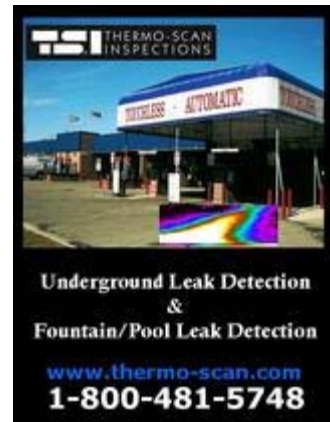
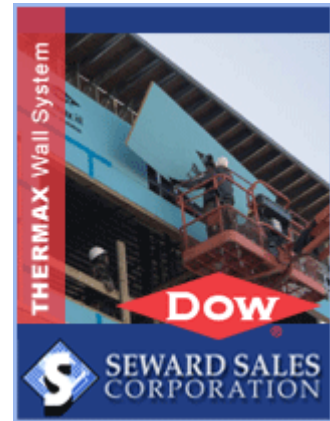
Available resources concerning the Indiana Energy Conservation Code include:

- American Society of Heating, Refrigerating and Air-Conditioning Engineers (ASHRAE)
 - * Standards and Guidelines Bookstore - both print and PDF versions available
<http://www.ashrae.org/publications/page/1285>
 - * 90.1-2007 Online Reader
http://openpub.realread.com/trserver/browser?title=/ASHRAE_1/ashrae_90_1_2007_IP_1280
 - * High Performance Building Magazine
<http://www.hpbmagazine.org/>

- Indiana Department of Homeland Security – <http://www.in.gov/dhs>
 - * Fire Prevention and Building Services / Code Services
<http://www.in.gov/dhs/2375.htm>
 - * Proposed Amendments are available through the Code Services page listed above.

International Code Council (ICC) – <http://www.iccsafe.org>

- US Department of Energy (DOE)
 - * Building Energy Codes Program (BCEP)
<http://www.energycodes.gov/>
 - * COMcheck
<http://www.energycodes.gov/comcheck/>
 - * COMcheck Web – online code compliance tool
<http://energycode.pnl.gov/COMcheckWeb/>
 - * 3-Part Webcast on Requirements of ASHRAE/IESNA 90.1-2007
http://www.energycodes.gov/training/onlinetraining/webcast_standard9012007.stm





MARVIN
Windows and Doors
Built around you!

Steve Lien CSI, CDT, AIA
Senior Commercial Sales Manager
SteveLi@marvin.com
(317)752-8070

Integrity
for MARVIN
Windows and Doors
Built to perform.

THERMO-SCAN
INSPECTIONS

Underground Leak Detection
&
Fountain/Pool Leak Detection

www.thermo-scan.com
1-800-481-5748

EDGEWOOD
BUILDING • SUPPLY

www.edgewoodbuildingsupply.com

Quality Face Brick (FBX)
Thin Brick Systems
Manufactured Stone Products
Natural Stone Products
Clay Pavers

NORTH 430 W. CARMEL DR. 1580 E. EPLER AVE.
CARMEL, IN INDIANAPOLIS
317.846.6060 317.786.9208

MASONRY • DRYWALL

TABLE TOP PRICES
Indianapolis Chapter CSI

Ralph R Pitman, Jr., CSI, CDT



The Indianapolis Chapter CSI is accepting reservations for Table Tops for upcoming Chapter meetings. The list of programs for upcoming Chapter meetings is published in this newsletter, the web site, or contact Program chairman Andy McIntyre, so if you would like to target a particular meeting, make sure to get your reservation in early. We do have a limit of four spaces available for Table Tops in a standard meeting room and 10 if we have a double room. Table Tops are an opportunity to promote your company, products,

or services to all attendees of our regular chapter meeting during the social hour. There is a maximum of 20 minutes for Table Top presentation at a regular Chapter meeting. You have the floor for maximum of five minutes during the dinner to communicate to the entire group if there are four presenters. If there is a greater demand, the 20 minutes will be divided by the number of presenters and rounded down to the nearest 30 seconds.

The Table Top presentations are FREE, one time, to new members, and cost current Indianapolis Chapter members only \$75. Non-members get the same opportunity for \$125. A 30 by 60 table with a cover and skit will be included. All proceeds go to support the Chapters Education Fund. Another opportunity for a Table Top is during an Education Seminar. The cost is if you combine it with the Chapter meeting and Education Seminar the cost would be \$100 for current members and \$150 for non-members.

If you would like to schedule a Table Top for a future meeting or seminar, contact Ralph
(continued on page 13)

Baines Builders Products

TRUSTILE

Special-Lite Doors with more life.

METAL-ERA Continuing Education Program

Free Webinars Offered Monthly

Click for More Info

CONTINUING EDUCATION



Pitman, Sebree Architects, Inc., via e-mail at rpitman@sebreearchitects.com (317) 272-7800 or Matt Maier at mmaier@edgewoodbuildingsupply.com (317) 846-6060 make sure to put 'Table Top Request' in the subject line

*Advertise
with Us*

*Advertise
with Us*

STANLEY
SpecCentre
Services
HARDWARE SPECIFICATIONS &
CONTINUING EDUCATION
Laura Frye, AHC, CSI, CDT
765-242-1214

INNOVATIVE • SUSTAINABLE • BEAUTIFUL
www.rogersblock.com
ROGERS
BLOCK

THERMAX Wall System
DOW
SEWARD SALES CORPORATION



GREAT LAKES REGION, INSTITUTE ELCTIONS, AND INSTITUTE BY-LAWS RESULTS ANNOUNCED

Chapter Ambassador

Jack P. Morgan, CSI, CCS, CCCA, MAI, AIA

Election of new Officers for the Great Lakes Region Conference have been announced! Several Regional Offices were included on the national ballot just concluded. The successful candidates who start their terms July 1, 2010 are:

1. **Office of Great Lakes Region President-elect:**
Brandilyn Fry, CSI, CDT, AIA, NCARB - Akron-Canton CSI Chapter.
2. **Office of Great Lakes Region Vice President:**
Philip J. Babinec, RA, CSI, CCS, CCCA, LEED AP – Grand Rapids CSI Chapter.
3. **Office of Great Lakes Region Treasurer:**
Jack P. Morgan, CSI, CCS, CCCA, AIA, NCARB – Indianapolis CSI Chapter.

The following Institute Bylaws Amendments were approved by the national membership:

1. **Article III, Section 6:** Authorizes CSI's Board to conduct meetings via electronic means.
2. **Article V, Section 4:** Clarifies current and future election practices with regards to the roles of CSI's election vendor and Tellers Committee.
3. **Article X, Section 3:** Allows for flexibility in the nomination and election of nominees for Distinguished and Honorary Membership with regards to each year's administrative schedule.

(continued on page 15)



4. **Article XIII, Section 2:** Deletes obsolete introductory membership language in the Bylaws.

While the amendment to **Article IX, Sections 1 and 2**, which proposed a single "Member" classification received a majority vote, it did not receive the two-thirds vote required for change in the ByLaws. The current "**Professional Member**" and "**Industry/Associate Member**" classifications will remain unchanged.

The following were elected to CSI's National Board:

1. **President Elect:**
Paul Bertram, Jr., FCSI, CDT, LEED AP
2. **Vice President (Industry):**
Casey Robb, FCSI, CCPR, LEED AP
3. **Director-at-Large:**
Scott Tobias, CSI, CDT, AHC, LEED AP
4. **Treasurer:**
Robert Simmons, FCSI, CCPR
5. **Director from the Gulf States Region:**
Jimmy Lail, CSI
6. **Director from the Northeast Region:**
Denis L. Lemieux, CSI, CDT, AIA, LEED AP
7. **Director from the Northwest Region:**
Loren R. Berry, CSI, CDT, AIA
8. **Director from the Southwest Region:**
Joseph J. Anetrella, CSI, CCS, AIA
9. **Director from the West Region:**
Stephen Nash, CSI, CCS, CCCA, AIA

Congratulations to all the successful candidates!

EDGEWOOD
BUILDING • SUPPLY
www.edgewoodbuildingsupply.com
Quality Face Brick (FBX)
Thin Brick Systems
Manufactured Stone Products
Natural Stone Products
Clay Pavers

NORTH 430 W. CARMEL DR. 1580 E. EPLER AVE. SOUTH
CARMEL, IN INDIANAPOLIS
317.846.6060 317.786.9208

MASONRY • DRYWALL

MARVIN
Windows and Doors
Built around you.
Steve Lien CSI, CDT, AIA
Senior Commercial Sales Manager
SteveLi@marvin.com
(317)752-8070

Integrity
for AIA
Windows and Doors
Built to perform.

Baines
Builders Products

TRUSTILE

Special-Lite
Doors with more Life.

METAL-ERA
Continuing Education Program

Free Webinars
Offered Monthly

Click for More Info

CONTINUING EDUCATION
AIA FCI

THERMAX Wall System

DOW

SEWARD SALES CORPORATION



FEBRUARY PIX

Matt Maier and BD





TSI THERMO-SCAN INSPECTIONS

Underground Leak Detection & Fountain/Pool Leak Detection

www.thermo-scan.com
1-800-481-5748

IBC
 Indiana Brick Corporation
"the difference IS experience"
YOUR DIVISION 04 & CLAY PAVER RESOURCE

**BRUCE LYON
 BILL COCHRAN, CSI, BIA
 J.R. MILLER, CSI, CDT**

317-896-1600
WWW.IBCBRICK.COM

EDGEWOOD
 BUILDING • SUPPLY

www.edgewoodbuildingsupply.com

Quality Face Brick (FBX)
 Thin Brick Systems
 Manufactured Stone Products
 Natural Stone Products
 Clay Pavers

**NORTH 430 W. CARMEL DR. 1580 E. EPLER AVE.
 CARMEL, IN INDIANAPOLIS
 317.846.6060 317.786.9208**

MASONRY • DRYWALL

CHAPTER PHOTOS

Indianapolis Chapter CSI

Ralph R Pitman, Jr., CSI, CDT



The Indianapolis Chapter of CSI is fast approaching its 50th Anniversary in 2011. What I'd like to do is archive our history in picture for posterity. I have been taking pictures for the chapter for a short time now and need your help. What I'm looking for are any and all photos that have been taken since the beginning of the Chapter. It doesn't matter if they are old black & whites or new digitals, we need them all. All photos submitted to me will be scanned and returned or you could scan them and send me a disk. If anyone can help locate all the

pictures taken during the SpecSource days that would be a start. A special thanks to everyone for allowing me to take your pictures and upload them this past year. I would like to thank Matt Maier and BD for helping out by taking pictures in February. Below is a NEW link to all the pictures I have collected so far, 110+ galleries. Stop by and leave a comment about who's in the picture or where it was taken. Please see me at the monthly meetings or contact me at Sebree Architects, Inc., via e-mail at rpitman@sebreearchitects.com make sure to put 'Old Pics' in the subject line or at (317) 272-7800.

<http://picasaweb.google.com/csiindy>

STANLEY HARDWARE SPECIFICATIONS & CONTINUING EDUCATION

SpecCentre Services
 Laura Frye, AHC, CSI, CDT
 765-242-1214

INNOVATIVE • SUSTAINABLE • BEAUTIFUL

www.rogersblock.com

ROGERS BLOCK



INDIANAPOLIS CHAPTER CSI BOARD MEETING MINUTES

January 2010

Respectfully Submitted, Robin Leising, Secretary, Indianapolis Chapter CSI

January 14, 2010

Indianapolis Chapter CSI January Board Meeting
InterDesign, 141 E. Ohio Street, Indianapolis

Attendance: Phil McMullan, Jack Morgan, Pete Kerfoot, Andy Meiring, Robin Leising, Blake Wagner, Bill Cochran,
Edmund Brown, Mark Smith, Cheri Longerbone, Scott Bays, Kathy Bultman
Excused: Ralph Pitman
Guest:

Indianapolis Chapter Board Meeting called to order: 6:16 pm

1.0 – Review Meeting Minutes of previous Meeting: Leising

1.1 The Board approved the minutes as corrected. (Wagner/Morgan) Motion Passed.

2.0 – Treasurer's Report:

2.1 Review bills and budget. **Meiring**
2.1.1 Review bills to be paid. Submit for audit.

3.0 – Committee Reports:

3.1 Academic Affairs/Student Affiliate: Kerfoot

3.1.1 Email university on seminar coming up in Feb. No response as of yet. Committee will follow up.

3.2 Awards: Leising

3.2.1 Institute chapter commendation has been sent and received.

3.3 Certification: Morgan

3.3.1 Early bird registration ends at the end of January
3.3.2 Classes being formed for CDT and CCS.
3.3.3 Tests are March 29th through April 3rd.

3.4 Communications: Cochran

3.4.1 Committee calling on advertising.
3.4.2 Roster being reviewed for final corrections and prepare to be sent to the printer.
3.4.3 Need email addresses for Institute elections.

(continued on page 19)

MARVIN
WINDOWS AND DOORS
Built around you:
Steve Lien CSI, CDT, AIA
Senior Commercial Sales Manager
SteveLi@marvin.com
(317)752-8070
Integrity
for MARVIN
Windows and Doors
Built to perform.

THERMAX Wall System
DOW
SEWARD SALES CORPORATION

TSI THERMO-SCAN INSPECTIONS
WIRELESS - AUTOMATIC
Underground Leak Detection & Fountain/Pool Leak Detection
www.thermo-scan.com
1-800-481-5748

IR Ingersoll Rand
Security Technologies
KEN_COOK@IRCO.COM

American Red Cross



3.5 Education: Brown

- 3.5.1 February Masonry Seminar will have 5 panelists and a moderator. It will offer 2 CSI and AIA learning units.
- 3.5.2 March 18th joint seminar with AIA on ASHRAE.
- 3.5.3 May seminar on Metal Corrosion.
- 3.5.4 July seminar on changes to the Architectural Woodworking Institute Standards.

3.6 Golf Outing: Cochran

- 3.6.1 Receiving affordable golf package due to deals. Discussion on sponsorship.
- 3.6.2 Date for the golf outing to be Thursday, July 29th, 2010. Change in date due to the Region Conference.

3.7 Tradeshow: Bultman

- 3.7.1 Attendance was up in comparison to previous years. Discussion

3.8 Membership/Orientation: Bays

- 3.8.1 50/50 membership, at least one new member. Discussion
- 3.8.2 This program will not be continued by Institute.
- 3.8.3 Looking for volunteers from the entire membership for the ISA tradeshow. Discussion
- 3.8.4 Member loyalty program is still in affect.

3.9 Programs: Wagner

- 3.9.1 Jan 2010 "Writing Good Specifications". Invited ISA and ICA to the program. Discussion.
- 3.9.2 Feb 2010 Indiana Limestone Institute.
- 3.9.3 March 2010 National President Mike Davis has been confirmed.
- 3.9.4 April 2010 AIA joint meeting tour of the JW Marriot. Still working through logistics.
- 3.9.5 May 2010 Steel topic in conjunction with seminar on metal corrosion.
- 3.9.6 June 2010 Awards Banquet.
- 3.9.7 October 2010 Tour of the new convention center.
- 3.9.8 Andy McIntyre will be taking over as the Program Chair through the remainder of this fiscal year.

3.10 National Convention / Region Conference Morgan

- 3.10.1 National Conference in Philadelphia, Pa. in May. Registration is open online. (continued on page 20)



- 3.10.2 Region Conference in Columbus, Oh. on July 22-25. There will be a caucus.
- 3.10.3 Reimbursement requirements discussion.

3.11 CSI Indy 50th Anniversary: McMullan

- 3.11.1 Chairman should be in place soon and a schedule for the first meeting established.

3.12 Special Events: Smith

- 3.12.1 Working on activities and budget information for a Summer Membership Event. Discussion

3.13 Table Tops: Pitman

- 3.13.1 No report.

3.14 Technical: Longerbone

- 3.14.1 No Report.

4.0 – Old Business:

4.1 Trust update – McMullan

- 4.1.1 Trust has been legally filed with the State of Indiana. Discussion
- 4.1.2 Revised Budget – discussion on revising budget to reflect tough times. Discussion

5.0 – Tabled / In-Progress Business (No discussion Needed):

5.1 By-Laws – In Process – Don Amt Chair

5.2 Policy Manual / Administrative Guide

- 5.2.1 Posting of current document – In Progress
- 5.2.2 Review of separating Policy Manual from Administrative Guide – In Progress

6.0 – New Business:

6.1 50/50 program for 2010 GLR Conference. Needs approval from chapter. McMullan

6.1.1 Motion that we support the region to utilize the 50/50 program at the 2010 GLR Conference in Columbus, OH. **(Bays/Wagner)** Motion passed.

6.2 Awards and Holiday Party Venue – Pete Baker tentatively scheduled the award banquet and holiday party at the Columbia Club. Needs deposit for each to hold our scheduled dates. Discussion **McMullan**

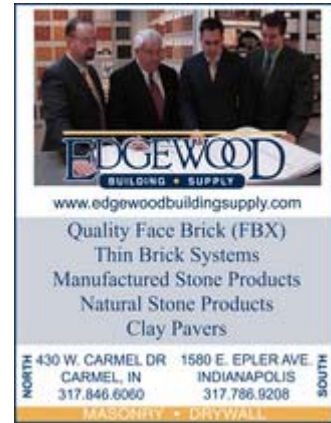
6.3 Riverwalk contract for our monthly meetings was discussed. **McMullan**

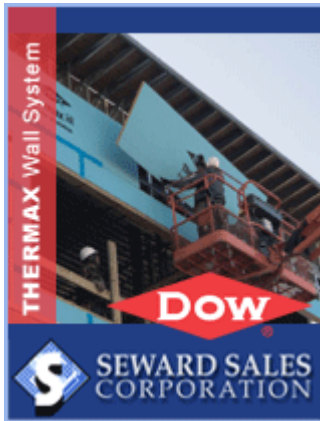
6.4 Max Hartzler's wife passed away. **Smith**

6.5 Webinar Feb. 8th that Jack is hosting on what CSI can do for area schools.

7.0 – Next Meeting: February 11, 2010 InterDesign

(continued on page 21)





Adjournment: 7:52 pm

Attachments: Board Meeting Agenda January 2010
Treasurer's Report January 2010

Respectfully Submitted, Robin Leising, Secretary, Indianapolis Chapter CSI

CERTIFICATION QUIZ ANSWERS

Indianapolis Chapter Quizmaster

Jack P. Morgan, CSI, CCS, CCCA, MAI, AIA

ANSWERS: 1. -c; 2. -c; 3. - b; 4. - b; 5. - a
(March 2010, The Winners Circle-Electronic)





BOARD OF DIRECTORS

Jack Morgan (10), *Ex-Officio*
 Phil McMullan (11), *President* - (317) 846-4655
 Blake Wagner (11), *President-Elect* - (317) 263-9655
 Mark Smith (11), *Director* - (317) 726-1060
 Ralph Pitman (11), *Director* - (317) 272-7800
 Robin Leising (11), *Secretary* - (317) 263-6226
 Pete Kerfoot (12), *Vice President* - (317) 867-2566
 Andrew Meiring (10), *Treasurer*
 Ed Brown (12), *Director*
 Kathy Bultman (10), *Director* - (317) 881-4757
 William Cochran (10), *Director* - (317) 896-1600
 Scott Bays (11), *Director* - (317) 849-6066
 Cheri Longerbone (12), *Director*

INSTITUTE OFFICES

The Construction
 Specifications Institute
 99 Canal Center Plaza, Suite 300
 Alexandria, VA 22314
 (800) 689-2900
 (703) 684-0300 • Fax (703) 684-0465
www.csinet.org

ADDRESS CHANGE?

If you are moving or changing the address at which you receive CSI mail, you MUST contact the Institute and change/correct your address with them. You can accomplish this relatively quickly by calling (800) 689-2900 and ask for the Manager, Member/Customer Service.

NEWSLETTER SUBMISSIONS

Editorial content for future monthly communications, whatever form they may take, should be emailed to Scott Perez at sperez@fulcrum-studios.com or a disk mailed to: Indianapolis Chapter CSI; Box 20802; Indianapolis IN 46220

COMMITTEES

Academic Affairs, *Pete Kerfoot* - (317) 867-2566
 Advertising, *Dan McCloskey* - (317) 635-5030
 CEU's/AIA LU's, *Kristin Welty* - (317) 402-5956
 Awards, *Pete Baker* - (317) 252-5415
 Budget, *Andrew J. Meiring* - (317) 670-9349
 Bylaws, *Andrew Meiring* - (317) 848-7800
 Certification, *Chuck Thompson* - (317) 275-1850
 Chapter Librarian, *Joe McGuire* - (317) 529-4175
 Communications, *Dan McCloskey* - (317) 635-5030
 Ambassador 09-10, *Jack P. Morgan* - (317) 508-4516
 Education, *Ed Brown* - (317) 875-5500
 Fellows, *Joe McGuire* - (317) 529-4175
 Golf Outing, *Bill Cochran* - (317) 896-1600
 Goodwill Ambassador, *Paula Pearson* - (317) 547-9511
 Handshaker, *Mark Smith* - (317) 726-1060
 Meeting Arrangements, *Todd Taykowski* - (317) 575-7258
 Membership, *Scott Bays* - (317) 849-6066
 Membership Retention, *Robin Leising* - (317) 263-6226
 Newsletter, *Dan McCloskey* - (317) 635-5030
 Nominations, *Blake Wagner* - 317-263-9655
 Orientation, *Mike Brannan* - (317) 632-7484
 President's Forum, *Jack Morgan* - (317) 508-4516
 Programs, *Ed Brown* - (317) 875-5500
 Rafflemeister, *Matt Maier* - (317) 846-6060
 Roster, *Robin Leising* - (317) 412-0577
 Scholarship, *Ron Boots* - (317) 844-4008
 Special Events, *Peter Baker* - (317) 252-5415
 Table Tops, *Ralph R. Pitman* - (317) 272-7800
 Technical, *Paul Sternberg* - (317) 819-7878
 Tellers, *Kristin Welty* - (317) 263-8125
 Trade Show, *Glen Baines* - (317) 263-8125
 Web Site, *Mike Maxwell* - (317) 786-0483

ADVERTISING

Support the Indianapolis Chapter CSI by advertising in future monthly communications, whatever form they may take. [Sign-up online here](#) or contact the Communications Chair at csiadmin@csiindy.org for rates and deadlines.



Knowledge for Creating
 and Sustaining the
 Built Environment

The Construction Specifications Institute advances the process of creating and sustaining the built environment for the benefit of the construction community by using the diversity of its members to exchange knowledge. CSI members include architects, engineers, specifiers, interior designers, contractors, building owners, facility managers, and product manufacturers and representatives. Its long history of industry-wide membership has resulted in improved communication and unprecedented teamwork to develop innovative products and services of benefit to all involved.

THE WINNER'S CIRCLE - March 2010